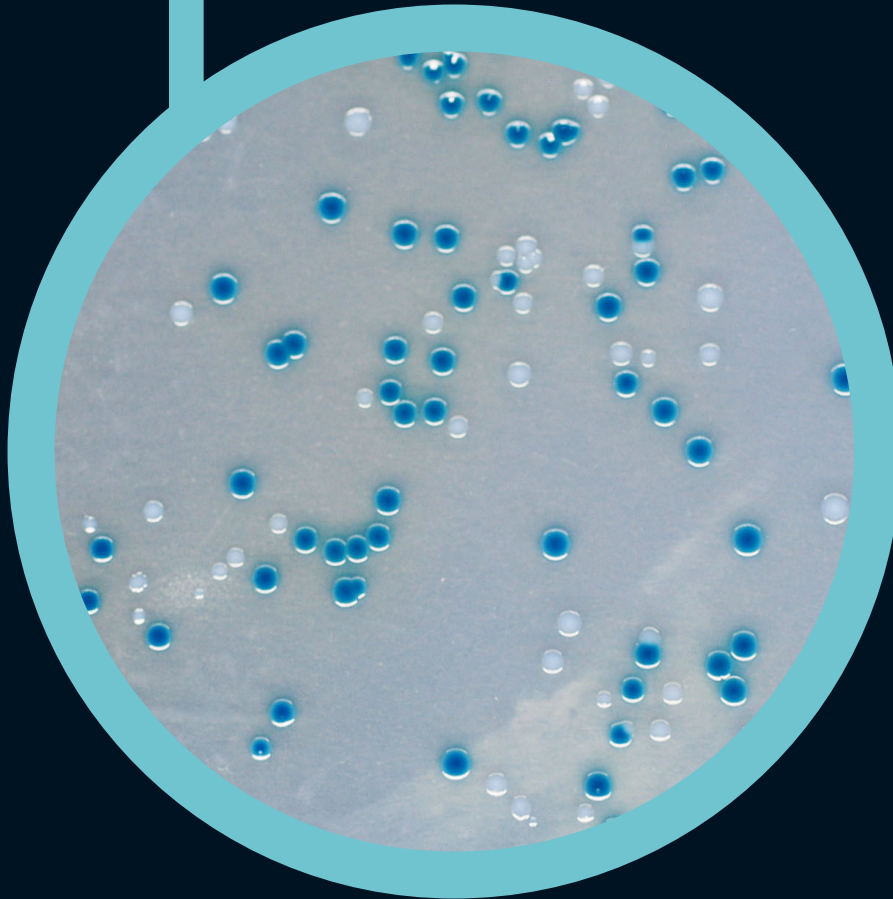


● *E.sakazakii* Agar



For detection of *E.sakazakii* (*Cronobacter* spp.)
according to ISO/TS 22964 standard

● E.sakazakii agar

www.CHROMagar.com

For detection of *Enterobacter sakazakii* (*Cronobacter* spp) according to the ISO/TS 22964 standard requirements.

Background

« *Enterobacter sakazakii* is a gram-negative, non-spore-forming bacterium belonging to the Enterobacteriaceae family <.....> It has been implicated in outbreaks causing meningitis or enteritis, especially in infants. In the few outbreaks reported 20% to >50% of the infants who contracted the disease died. For survivors, severe lasting complications can result including neurological disorders. The outcome related to adult disease seems to be significantly milder. »

« The infant food industry should be encouraged to reduce the concentration and prevalence of *E. sakazakii* in both the manufacturing environment and powdered infant formula. To this end, the infant food industry should consider implementing an effective environmental monitoring programme and the use of Enterobacteriaceae rather than coliform testing as an indicator of hygienic control in factory production lines. »

Extracts From WHO Microbial Risk Assessment Feb-2007

Medium Performance

1 ISO/TS 22964 STANDARD

E.sakazakii agar is a chromogenic medium for detection of *E.sakazakii* in food, mainly powdered milk, according to the ISO/TS 22964 standard.

2 INTENSE BLUE COLONIES

E.sakazakii will grow in blue colonies while most other bacteria will be inhibited or grow in colourless colonies, after Incubation at 44°C for 24h.

Medium Description

Powder Base	
Total	30.7 g/L
Agar	15.0
Casein Peptone	7.0
Yeast extract	3.0
Sodium chloride	5.0
Sodium deoxycholate	0.6
X-α-Glucoside	0.15
Crystal violet	0.002
Storage at 15/30°C - pH: 7.0 +/- 0.2	
Shelf Life	2 years

Usual Samples	Milk powder, powdered infant formula, related environmental samples.
Procedure	Appropriate pre-enrichment and enrichment steps. Streaking 10µl. Incubation 24h at 44°C Aerobic conditions.

Please read carefully the instructions for use (IFU document) available on www.CHROMagar.com

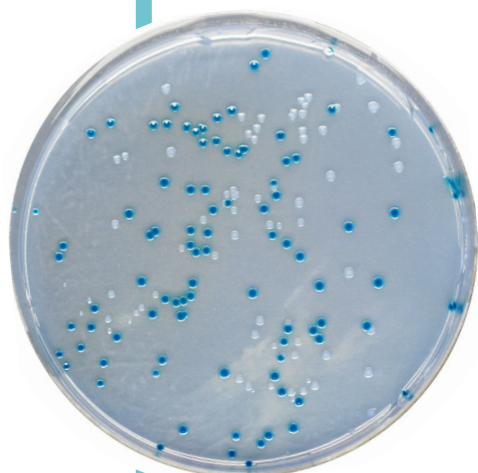
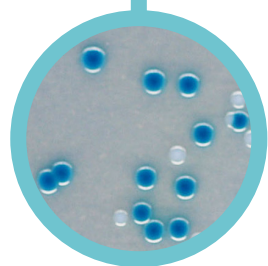


Plate Reading

For detection of:

- *E.sakazakii*
→ green to blue
- Other Gram (-)
→ inhibited, colourless or light purple/translucent colonies
- Gram (+) bacteria
→ inhibited



Quality Control Strains

<i>E.sakazakii</i> ATCC® 51329	green-blue
<i>E.coli</i> ATCC® 25922	grey with light blue
<i>E.cloacae</i> ATCC® 35030	grey with light blue
<i>E.faecalis</i> ATCC® 29212	inhibited
<i>S.aureus</i> ATCC® 25923	inhibited
<i>Klebsiella</i> ATCC® 13883	partially inhibited

ATCC® is a registered trademark of the American Type Culture Collection

Order References

Please use these product references when contacting your local distributor:

5000 ml pack CS 812

Manufacturer: CHROMagar
4 place du 18 juin 1940 75006 Paris - France
Email: CHROMagar@CHROMagar.com
Website: www.CHROMagar.com

Find your nearest distributor on
www.CHROMagar.com/contact